

24" | 610mm

## Davit Arm

Fixed (IN2395 - IN2363)



**XTIRPA™**

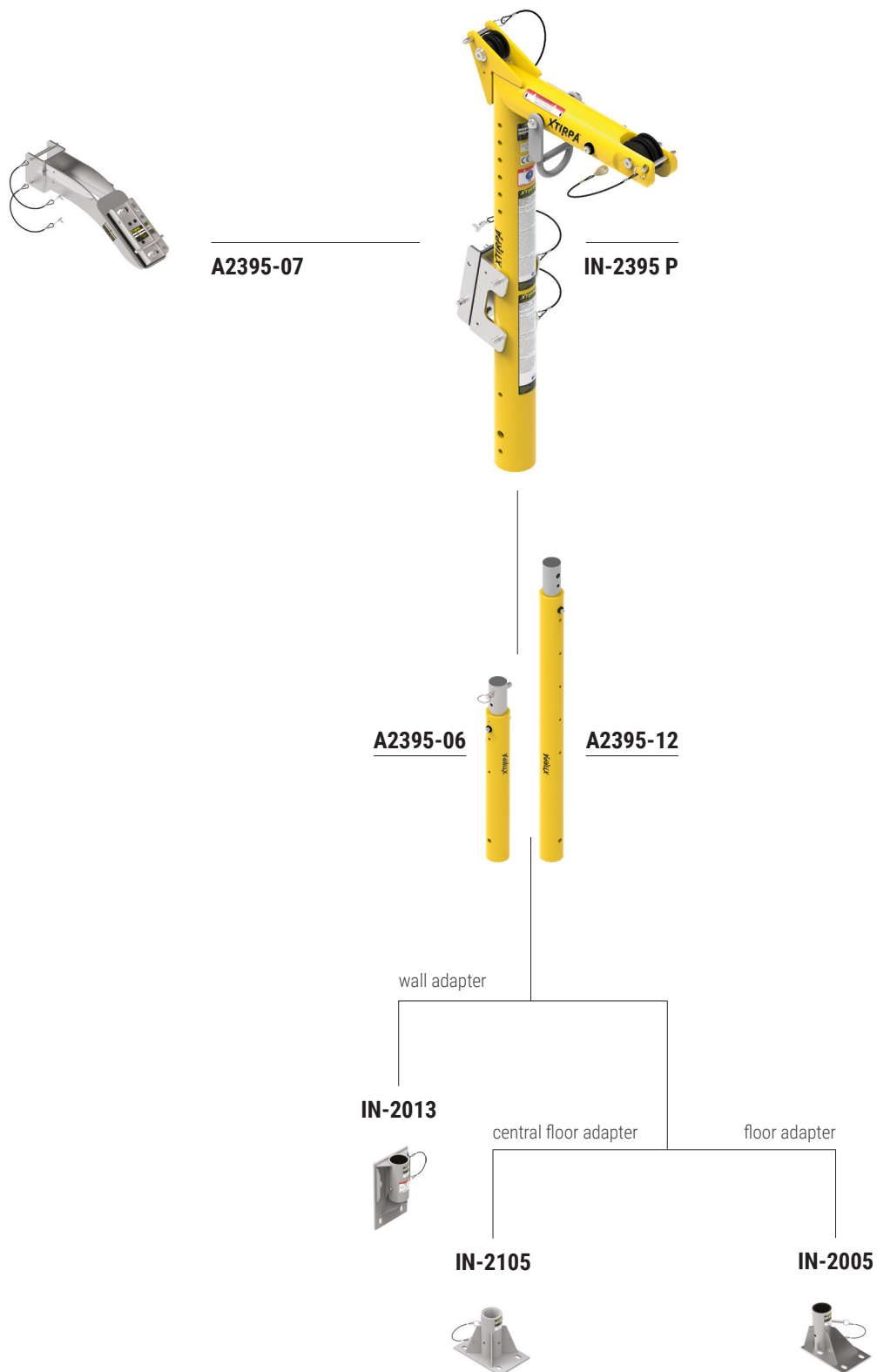
24" | 610mm

# Davit arm with built-in mast

With adapters



# Assembling scheme



# XTIRPA™

## IN-2395 P Davit Arm with built-in mast



To be used in small spaces. Ability to use extensions to increase the height of the davit arm (A2395-12 extension 40" (1016 mm) and A2395-06 extension 22" (559 mm). Offset winch adapter (A2395-07) for additional block. Suggested for manhole diameters between 19.7" and 27.6" (500 mm and 700 mm). For two users.

**Material:**  
Aluminium

**Dimensions:**  
Ø 3" (76 mm)  
W 18.5" (470 mm)  
H 36.2" (920 mm)

**Weight:**  
23 lb (10.4 kg)



## A2395-06 / A2395-12 Mast extensions

Used to extend the height of the davit arm with built-in mast IN-2395.

Part	Length	Weight
A2395-06	22" (559 mm)	10 lb (4.5 kg)
A2395-12	40" (1016 mm)	16 lb (7.3 kg)

**Material: Aluminium**



## A2395-07 Support for retractable lifeline or winch

Compatible with davit arm with built-in mast IN-2395,  
when a secondary block is needed.

**Material: Zinc plated steel**

**Dimensions: L 18.25" (464 mm) x W 5" (126 mm) x H 6.9" (175 mm)**

**Weight: 11 lb (5 kg)**

24" | 610<sub>mm</sub>

## Davit arm with built-in mast

With adapters



### IN-2013

#### Wall adapter for concrete and steel

Compatible with mast IN-2003 and 24" (610 mm) davit arm IN-2210.  
Optional sandwich plate P2013-008 available.  
Anchor bolts not included. \*Allowable working angle.

**Material:** AISI 304 stainless steel also available in zinc plated steel (IN- 2107) or AISI 316 stainless steel (IN-2327)  
**Dimensions:** L 9" (229 mm) x W 4.37" (111 mm) x H 16" (406 mm)  
**Weight:** 29 lb (13 kg)



### IN-2005

#### Floor adapter for concrete and steel

Compatible with mast IN-2003 and 24" (610 mm) davit arm IN-2210 on concrete or steel.  
Increases the reach of the system by installing it near the edge of the structure.  
Optional sandwich plate P2005-001 available.  
Anchor bolts not included. \*Allowable working angle.

**Material:** AISI 304 stainless steel also available in zinc plated steel IN- 2106 or AISI 316 stainless steel IN-2311  
**Dimensions:** L 12.5" (318 mm) x L 8" (203 mm) x H 9.25" (235 mm)  
**Weight:** 23 lb (10 kg)



### IN-2105

#### Central floor adapter for concrete and steel

Compatible with mast IN-2003 and 24" (610 mm) davit arm IN-2210.  
It allows to work with fixed or multiple of 90° angles.  
Optional sandwich plate P2105-001 available.  
Anchor bolts not included. \*Allowable working angle.

**Material:** AISI 304 stainless steel also available in zinc plated steel IN- 2137 or AISI 316 stainless steel IN-2329  
**Dimensions:** L 12.5" (318 mm) x L 8" (203 mm) x H 9.25" (235 mm)  
**Weight:** 23 lb (10 kg)



CONFINED SPACE AND RESCUE SYSTEMS

**ADVANCED DESIGN.**

EASY ASSEMBLY.

**X**TIRPA™

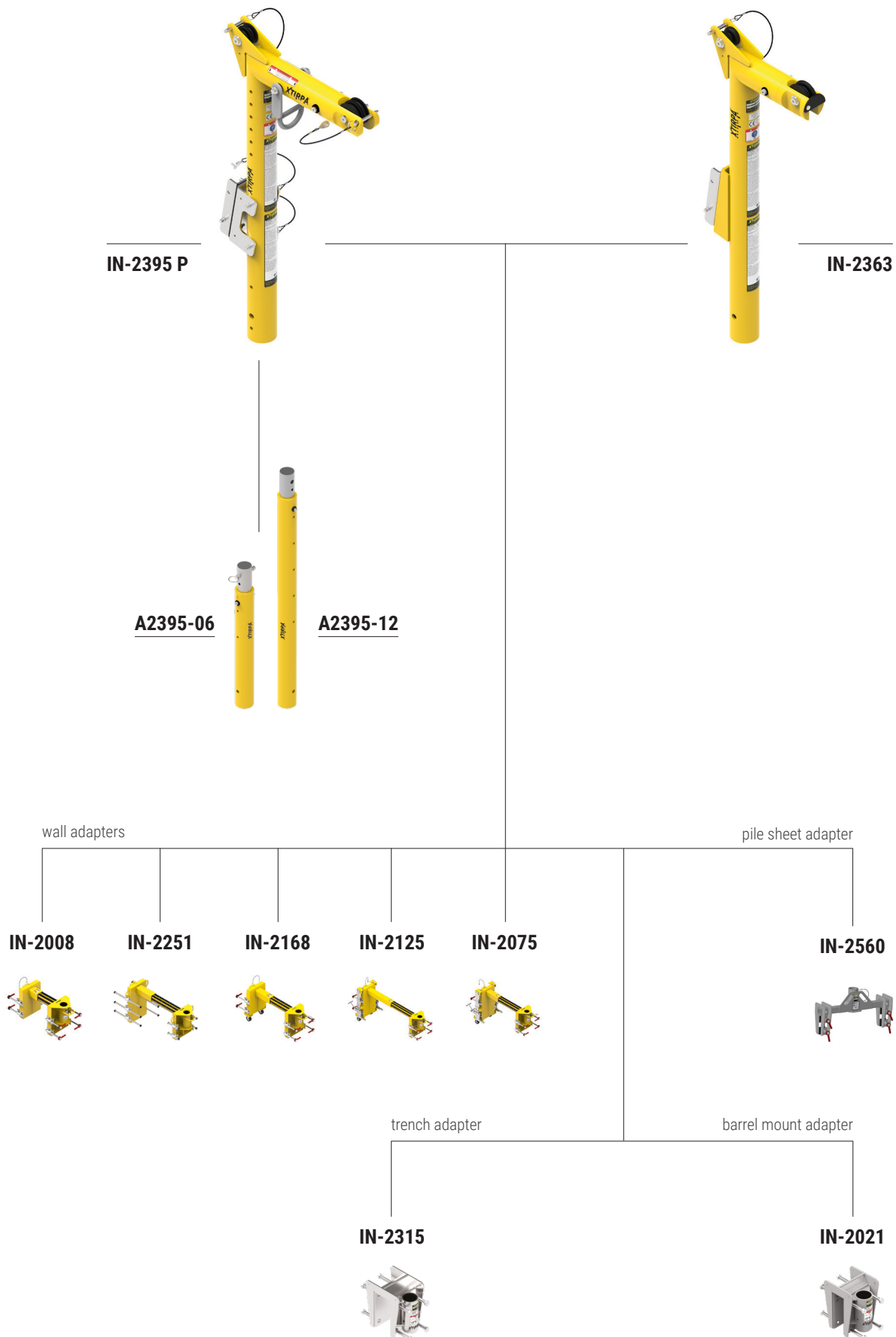
24" | 610mm

# Davit arm with built-in mast

With adjustable wall adapters



# Assembling scheme



## IN-2395 P Davit Arm with built-in mast



To be used in small spaces. Ability to use extensions to increase the height of the davit arm (A2395-12 extension 40" (1016 mm) and A2395-06 extension 22" (559 mm). Offset winch adapter (A2395-07) for additional block. Suggested for manhole diameters between 19.7" and 27.6" (500 mm and 700 mm). For two users.

**Material:**  
Aluminium

**Dimensions:**  
Ø 3" (76 mm)  
W 18.5" (470 mm)  
H 36.2" (920 mm)

**Weight:**  
23 lb (10.4 kg)

## IN-2363 Davit arm with built-in mast



Designed To be used in small spaces that do not allow the installation of davit arm IN-2210 and mast IN-2003. Suggested for manhole diameters less or equal to 17.7" (450 mm). 9" reach (229 mm) For one user only!

**Material:**  
aluminium

**Dimensions:**  
Ø 3" (76 mm)  
W 14" (348 mm)  
H 36" (920 mm)

**Weight:**  
15 lb (6.8 kg)

24" | 610mm

## Davit arm with built-in mast

With adjustable wall adapters

### A2395-06 / A2395-12

#### Mast extensions

Used to extend the height of the davit arm with built-in mast IN-2395.

Part	Length	Weight
A2395-06	22" (559 mm)	10 lb (4.5 kg)
A2395-12	40" (1016 mm)	16 lb (7.3 kg)

**Material:** Aluminium



### IN-2008

#### Adjustable wall adapter

Compatible on walls with a width between 6" and 15.75" (152 mm and 400 mm).

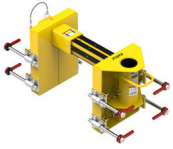
Fitted with eight spanners to tighten the fixing bars.

\*Allowable working angle.

**Material:** Aluminium

**Dimensions:** L 21-36.7" (533-932 mm) x W 14.6" (372 mm) x H 16.5" (419 mm)

**Weight:** 65 lb (30 kg)



### IN-2251

#### Adjustable wall adapter

Compatible on walls with a width of 12" to 30" (305 mm to 762 mm).

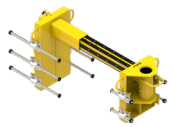
Fitted with eight spanners to tighten the fixing bars.

\*Allowable working angle.

**Material:** Aluminium

**Dimensions:** L 46"-64" (1168-1624 mm) x W 17.25" (438 mm) x H 22.4" (570 mm)

**Weight:** 75 lb (34 kg)



### IN-2168

#### Adjustable wall adapter

Compatible on walls with a width of 12" to 24" (305 mm to 610 mm).

Equipped with wheels and with eight spanners to tighten the fixing bars.

\*Allowable working angle.

**Material:** Aluminium

**Dimensions:** L 31"-45" (787-1145 mm) x W 13.5" (344 mm) x H 21.2" (538 mm)

**Weight:** 68 lb (31 kg)



## IN-2021

### Fixed barrel mount adapter

Compatible on walls with a maximum width of 3.1" (79mm).  
Allowable working angle.

**Material:** AISI 304 stainless steel also available in zinc plated steel (IN-2129)  
**Dimensions:** L 8.5" (216 mm) x W 11.3-14.1" (287-357 mm) x H 12.3" (311 mm)  
**Weight:** 38 lb (17 kg)



## IN-2315

### Fixed trench adapter

Compatible on walls with width between 2" and 5" (51 mm and 127 mm).  
\*Allowable working angle.

**Material:** zinc plated steel  
**Dimensions:** L 8.5" (216 mm) x W 13 - 16" (329-408 mm) x H 12.3" (311 mm)  
**Weight:** 47 lb (21 kg)



## IN-2560

### Pile Sheet Adapter

Compatible on the following trench sheets CS69-KDVI8EPZ27.  
\*Allowable working angle.

**Material:** stainless steel  
**Dimensions:** L 33" (838 mm) x W 11.53" (293 mm) x H 17.38" (441 mm)  
**Weight:** 70 lb (31.7 kg)



## IN-2125

### Adjustable wall adapter

Compatible on walls with a width of 24" to 45" (610 mm to 1143 mm).  
Equipped with wheels and with eight spanners to tighten the fixing bars.  
\*Allowable working angle.

**Material:** Aluminium  
**Dimensions:** L 41.6"-64" (1056-1615 mm) x W 19" (493 mm) x H 29" (732 mm)  
**Weight:** 115 lb (52 kg)



## IN-2075

### Adjustable wall adapter

Compatible on walls with a width of 12" to 31.5" (305 mm to 800 mm).  
Equipped with wheels and with eight spanners to tighten the fixing bars.  
\*Allowable working angle.

**Material:** Aluminium  
**Dimensions:** L 30"-50" (762-1272 mm) x W 19" (493 mm) x H 29" (732 mm)  
**Weight:** 114 lb (52 kg)



**XTIRPA™**

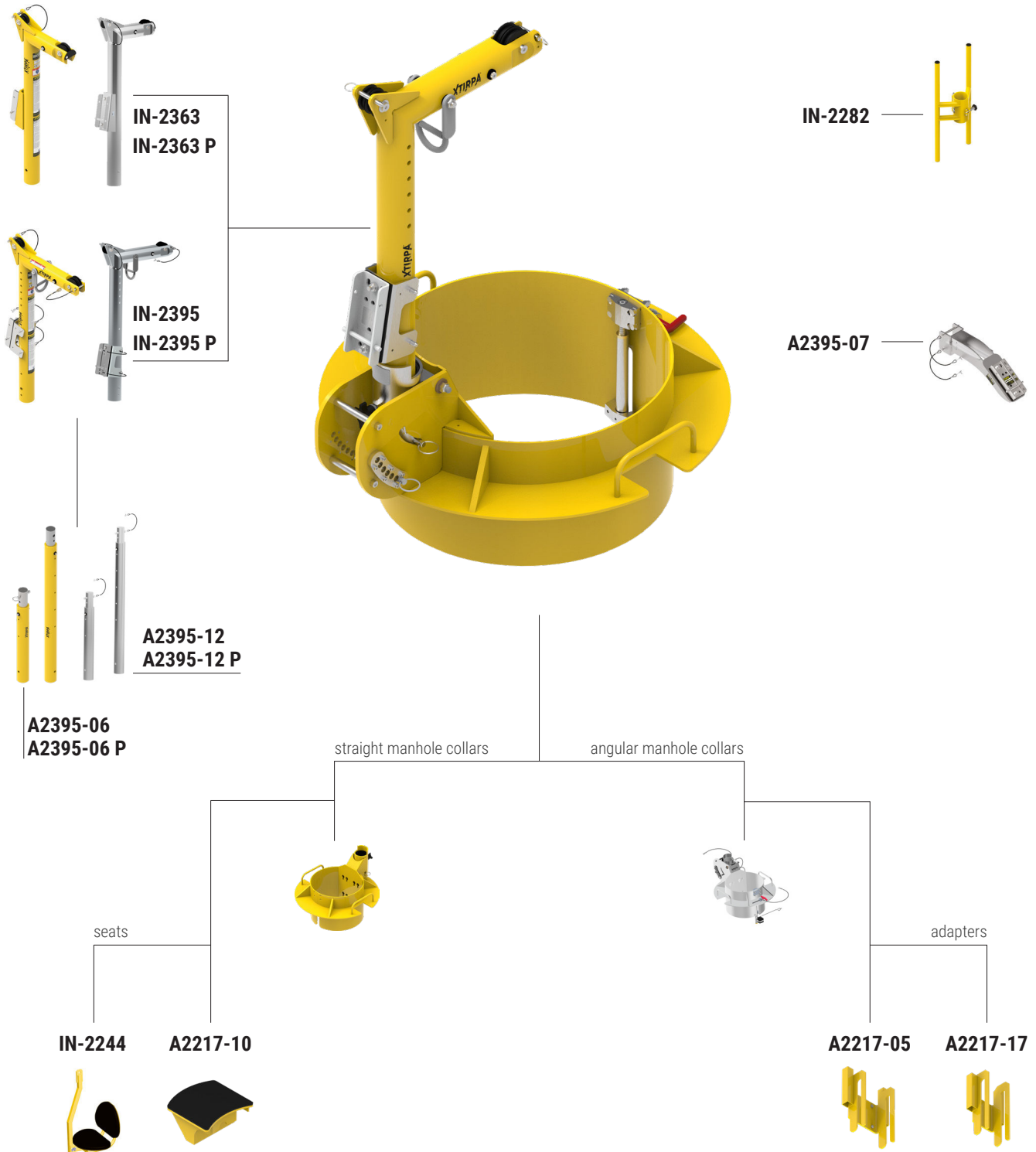
24" | 610mm

# Davit arm with built-in mast

With manhole collars



# Assembling scheme



## IN-2395 P Davit Arm with built-in mast



To be used in small spaces. Ability to use extensions to increase the height of the davit arm (A2395-12 extension 40" (1016 mm) and A2395-06 extension 22" (559 mm). Offset winch adapter (A2395-07) for additional block. Suggested for manhole diameters between 19.7" and 27.6" (500 mm and 700 mm). For two users.

**Material:**  
Aluminium

**Dimensions:**  
Ø 3" (76 mm)  
W 18.5" (470 mm)  
H 36.2" (920 mm)

**Weight:**  
23 lb (10.4 kg)

## IN-2363 P Davit arm with built-in mast



Designed To be used in small spaces that do not allow the installation of davit arm IN-2210 and mast IN-2003. Suggested for manhole diameters less or equal to 17.7" (450 mm). 9" reach (229 mm) For one user only!

**Material:**  
aluminium

**Dimensions:**  
Ø 3" (76 mm)  
W 14" (348 mm)  
H 36" (920 mm)

**Weight:**  
15 lb (6.8 kg)

24" | 610mm

## Davit Arm

With manhole collars

### A2395-06 P / A2395-12 P

#### Mast extensions

Used to extend the height of the davit arm with built-in mast IN-2395.

Part	Length	Weight
A2395-06	22" (559 mm)	10 lb (4.5 kg)
A2395-12	40" (1016 mm)	16 lb (7.3 kg)

**Material:** Aluminium / available in anodized version



### A2217-05

#### Ladder adapter for manhole collars

Allows attachment of a ladder to the manhole collar base to improve accessibility and stability. Compatible with manhole collars with diameters greater than or equal to 22" (559 mm). Anchor bolts included.

**Material:** Aluminium  
**Dimensions:** L 14" (356 mm) x W 6" (156 mm) x H 17.5" (445 mm)  
**Weight:** 10 lb (4.5 kg)



### A2217-17

#### Ladder adapter for manhole collars

Allows attachment of a ladder to the manhole collar base to improve accessibility and stability. Compatible with manhole collars with diameters smaller than 22" (559 mm). Anchor bolts included.

**Material:** Aluminium  
**Dimensions:** L 11.5" (292 mm) x W 6" (156 mm) x H 18" (457 mm)  
**Weight:** 9 lb (4 kg)



### IN-2282

#### Adaptable handrall for mast

Used with mast IN-2003 to ease entry and exit from confined spaces.

**Material:** Aluminium  
**Dimensions:** L 10.9" (277 mm) x W 6.6" (168 mm) x H 30.5" (775 mm)  
**Weight:** 5.5 lb (2.5 kg)



## **A2395-07** Support for retractable lifeline or winch

Compatible with davit arm with built-in mast IN-2395,  
when a secondary block is needed.

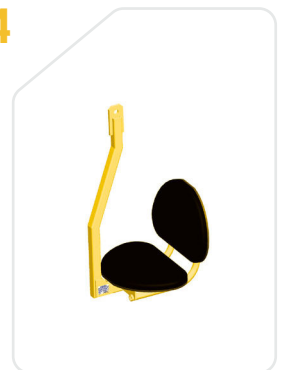
**Material: zinc plated steel**  
**Dimensions: L 18.25" (464 mm) x W 5" (126 mm) x H 6.9" (175 mm)**  
**Weight: 11 lb (5 kg)**



## **IN-2244** Positioning seat

Increases the operator's comfort during ascent and descent operations inside a confined space.  
To be connected to a man rated certified winch.  
Commonly used inside silos.

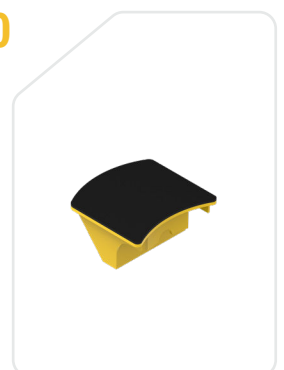
**Material: Aluminium**  
**Dimensions: L 17" (432 mm) x W 19.1" (486 mm) x H 33" (837 mm)**  
**Weight: 40 lb (18 kg)**



## **A2217-10** Manhole collar seat

This seat can be installed on any manhole collar to increase comfort  
when entering or working on a confined spaces entry point.  
Cannot be used with conical safety ring IN-2009 due to tilted edges.

**Material: Aluminium**  
**Dimensions: L 12" (305 mm) x W 10" (262 mm) x H 6" (143 mm)**  
**Weight: 6.5 lb (3 kg)**



## Straight manhole collars

All manhole collars are also available in anodized version.  
\*Allowable working angle.

Material: Aluminium



Product	Ø Manhole	Dimensions	Weight
IN-2362	14"-16" (356 mm-406 mm)	Ø 22.5" (572 mm) x H 18.4" (468 mm) / int. Ø 13.1" (333 mm)	30 lb (14 kg)
IN-2287	16"-18" (406 mm-457 mm)	Ø 24.8" (622 mm) x H 18.4" (468 mm) / int. Ø 15.1" (384 mm)	31 lb (14 kg)
IN-2219	18"-20" (457 mm-508 mm)	Ø 26.5" (673 mm) x H 18.4" (468 mm) / int. Ø 17.1" (435 mm)	34 lb (15 kg)
IN-2379	18"-20" (457 mm-508 mm)	Ø 26.5" (673 mm) x H 18.4" (468 mm) / int. Ø 17.1" (435 mm)	33 lb (15 kg)
IN-2220	20"-22" (508 mm-559 mm)	Ø 28.5" (724 mm) x H 18.4" (468 mm) / int. Ø 19.1" (486 mm)	36 lb (16 kg)
IN-2221	22"-24" (559 mm-610 mm)	Ø 30.5" (775 mm) x H 18.4" (468 mm) / int. Ø 21.1" (536.6 mm)	38 lb (17 kg)
IN-2217	24"-26" (610 mm-660 mm)	Ø 32.5" (826 mm) x H 18.4" (468 mm) / int. Ø 23.1" (587 mm)	40 lb (18 kg)
IN-2222	26"-28" (660 mm-711 mm)	Ø 34.5" (876 mm) x H 18.4" (468 mm) / int. Ø 25.1" (638 mm)	43 lb (20 kg)
IN-2218	28"-30" (711 mm-762 mm)	Ø 36.5" (927 mm) x H 18.4" (468 mm) / int. Ø 27.1" (689 mm)	46 lb (21 kg)
IN-2167	30"-32" (762 mm-812 mm)	Ø 38.5" (978 mm) x H 18.4" (468 mm) / int. Ø 29.1" (740 mm)	48 lb (22 kg)
IN-2223	32"-34" (812 mm-864 mm)	Ø 40.5" (1029 mm) x H 18.4" (468 mm) / int. Ø 31.1" (791 mm)	50 lb (23 kg)
IN-2224	34"-36" (864 mm-914 mm)	Ø 42.5" (1080 mm) x H 18.4" (468 mm) / int. Ø 33.1" (841 mm)	52 lb (24 kg)
IN-2476	36"-38" (914 mm-965 mm)	Ø 44.5" (1130 mm) x H 18.4" (468 mm) / int. Ø 35" (892 mm)	52 lb (24 kg)
IN-2306	38"-40" (965 mm-1016 mm)	Ø 46.5" (1181 mm) x H 18.4" (468 mm) / int. Ø 37.1" (943 mm)	56 lb (25 kg)

## Angular manhole collars

Manhole collars are also available in anodized version.  
Yellow paint is available upon request.  
\*Allowable working angle.

Material: Aluminium



Product	Inclination	Ø Manhole	Weight
IN-2486 P	0-30°	16"-18" (406 mm-457 mm)	44 lb (20 kg)
IN-2496 P	0-30°	18"-20" (457 mm-508 mm)	46 lb (21 kg)
IN-2497 P	0-30°	20"-22" (508 mm-559 mm)	48 lb (22 kg)
IN-2490 P	0-30°	22"-24" (559 mm-610 mm)	50 lb (23 kg)
IN-2498 P	0-30°	24"-26" (610 mm-660 mm)	52 lb (24 kg)
IN-2475 P	0-45°	24"-26" (610 mm-660 mm)	60 lb (27 kg)
IN-2499 P	0-30° with cutouts	26"-28" (660 mm-711 mm)	55 lb (25 kg)
IN-2500 P	0-30°	28"-30" (711 mm-762 mm)	57.3 lb (26 kg)
IN-2487 P	0-30°	30"-32" (762 mm-813 mm)	59.5 lb (27 kg)



# XTIRPA™

PRODUCT BROCHURE

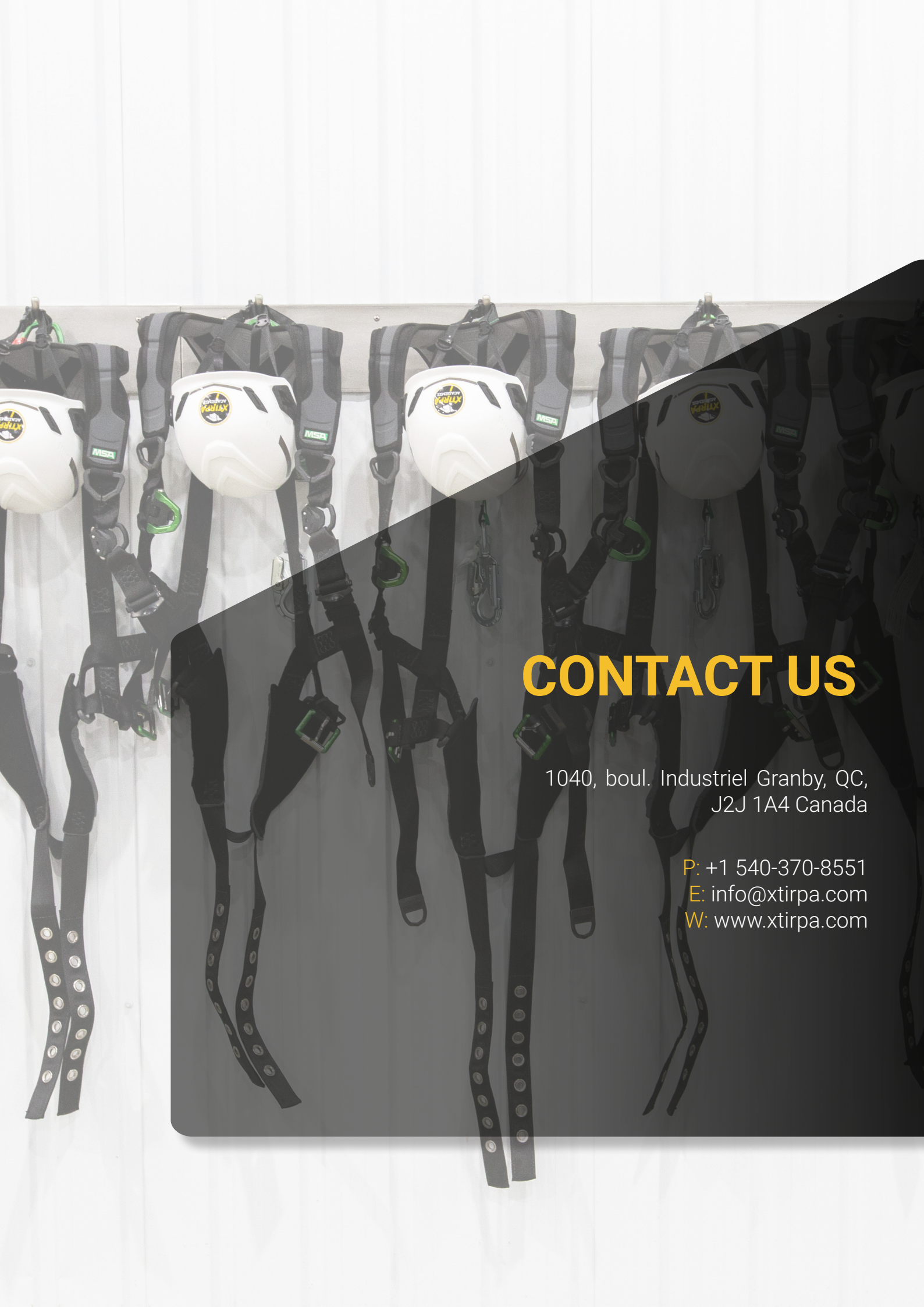
MODULAR SOLUTIONS

# Confined Space



CONFINED SPACE ACCESS AND RESCUE SYSTEMS

# ADVANCED DESIGN. EASY ASSEMBLY.



# CONTACT US

1040, boul. Industriel Granby, QC,  
J2J 1A4 Canada

P: +1 540-370-8551

E: [info@xtirpa.com](mailto:info@xtirpa.com)

W: [www.xtirpa.com](http://www.xtirpa.com)